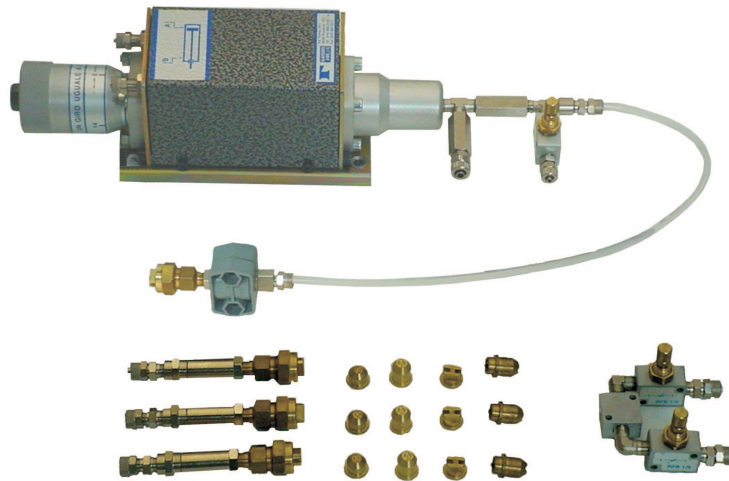


## Variable delivery PRESSURE INJECTOR

Spray lubrication system WITHOUT NEBULIZATION since lubricant is not mixed with air, but compressed and then sprayed.



## TECHNICAL DATA

Compression ratio 1:4  
Total capacity (max): 7.6 cc  
Adjustment range: 0 to 7.6 cc  
Control pressure: 4 to 8 bar  
Max pressure of tank: 0 to 1.5 bar  
Drip-preventer (valve): 2.7 bar

## MAIN FEATURES

The injector includes the following components:

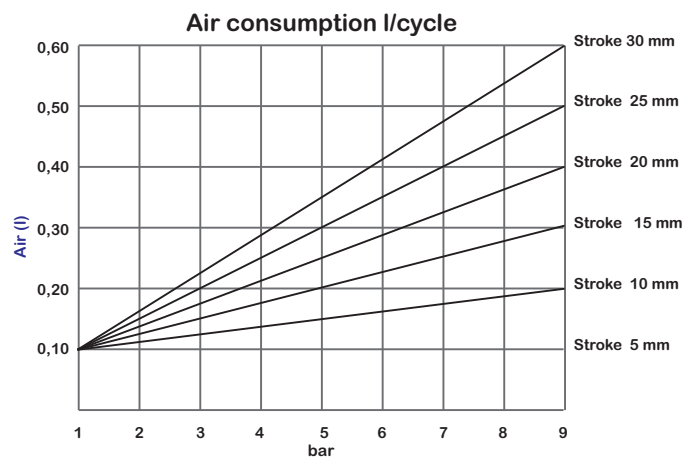
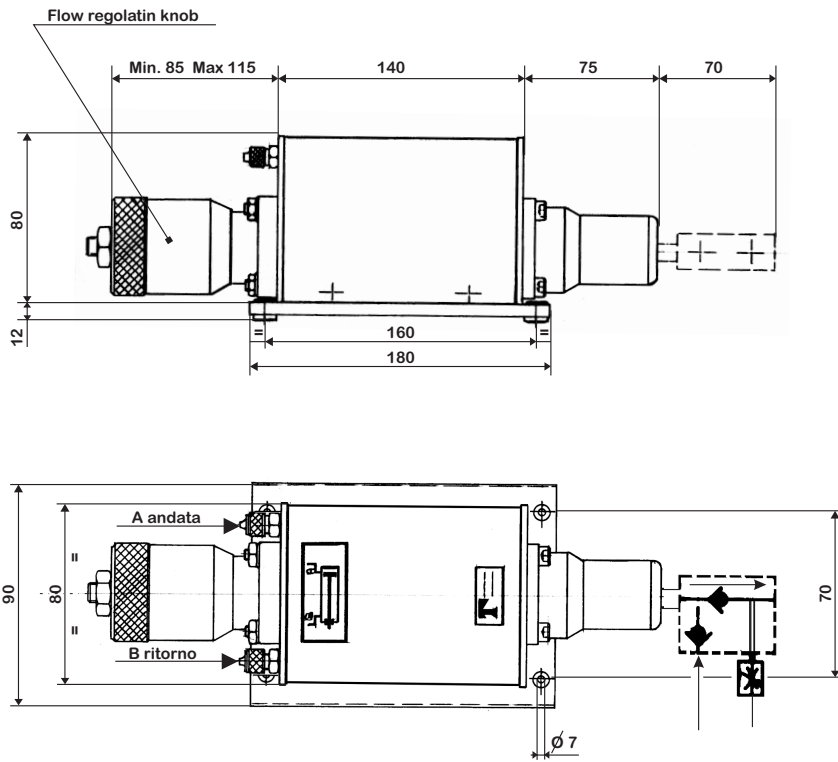
### **1) Variable delivery injector**

Colour: grey  
Micro-metric adjustment of oil flow  
Intake valves and drip-preventer

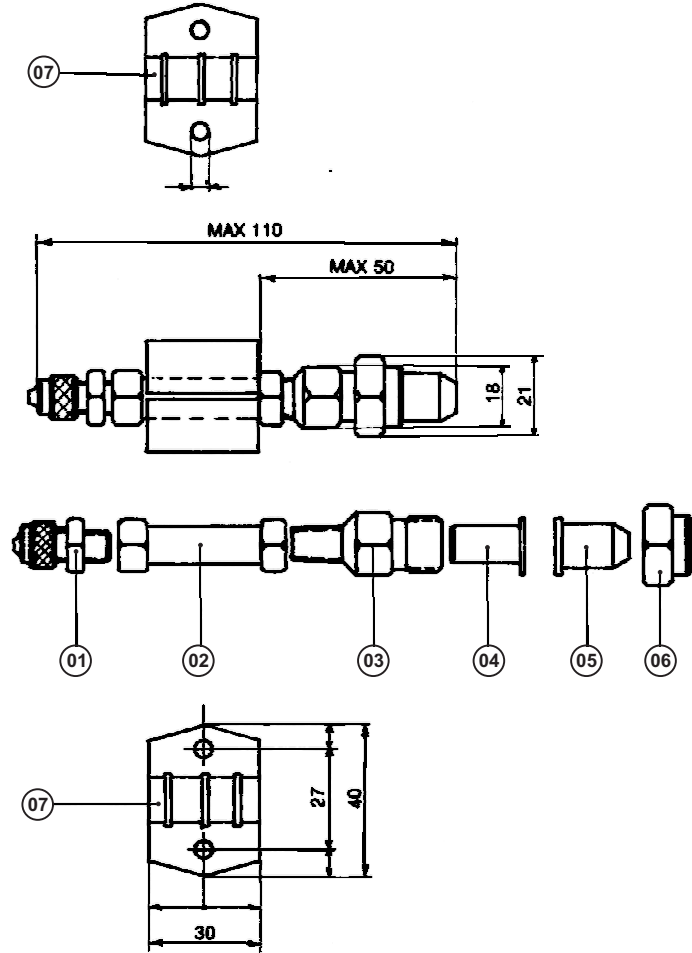
### **2) Spraying nozzles**

Nozzle body  
Half-shell fastening system  
Spray tips in different size and shapes  
Drip-preventer (valve)

## DIMENSIONS



**DIMENSIONS AND NOZZLES BODY BLOWN UP DWG.**



LEGEND			
01	Pipe fitting 1/8 -6/8	05	Spray nozzle
02	Extension 1/8	06	Sleeve
03	Body 1/8	07	Fastening half-collar, Ø 13 - 14
04	Unidirectional valve		

### STANDARD NOZZLES

Spray $\alpha$	ID Number	Jet shape	Orifice $\phi$	Type of lubricant recommended
110°	T.P. 11001	Fan	0.66	Thick, medium oil
110°	T.P. 11002	Fan	0.91	Thick oil
65°	T.P. 650017	Fan	0.28	Fluid oil
65°	T.P. 650025	Fan	0.33	Fluid oil
65°	T.P. 650050	Fan	0.46	Thick, medium oil
65°	T.P. 6501	Fan	0.66	Thick, medium oil
65°	T.P. 6502	Fan	0.91	Thick oil
63°	T.G. 03	Cone shape	0.51	Fluid oil
63°	T.G. 05	Cone shape	0.61	Thick, medium oil
80°	22624-1-80°	Cone shape*	0.41	Thick, medium oil
80°	22624-2-80°	Cone shape*	0.69	Thick, medium oil
0°	T.P. 000009	Straight	0.20	Fluid oil
0°	T.P. 000019	Straight	0.30	Thick, medium oil
0°	T.P. 000050	Straight	0.51	Thick oil

**N.B.** All nozzles give optimum results with chemical waters and fluid oils.  
The injector is equipped with the nozzles shown in figure.

\* Mist type spray ideal to humidify parts without soaking them excessively.

## **A FEW EXAMPLES OF APPLICATIONS**

- Lubrication of difficult-to-reach spots to be drawn
- Lubrication of holes to thread in cascade with shearing machines and threading machines
- Cyclic lubrication of parts in motion of dies or machine tools.
- Sectional lubrication of strips to shear according to a cyclic phase with the feeder.

## **OPTIONALS**

### **1) Tanks**

Colour: grey

Capacity: 14 lt

Coupling for lubricant filling

Support feet for floor mounting

Sliding cock for air inlet and blowdown

Air pressure regulator and overpressure valve

### **2) “Microtymer” timing device.**

With automatic, pulse generating valve

### **3) F.R.L. assembly**

### **4) With one or more nozzles**

### **5) With different shape nozzle tips (the various shapes may give different results depending on the oil density).**

All products of this catalogue are made by GAMMA SYSTEM

Gamma System reserves the right to modify the characteristics of its products, without any prior notice, in order to improve their operation.